

vibepanel

EFFLUENT SCREEN SEPARATOR



**Vertical passive separation screen.
Vibration clears blocked slots in
screen to de-water containment.**

“

Tihiroa Dairies Ltd invested in an upgrade to a new effluent system on our 800 cow Waitomo Farm. The decision was made to put in two concrete sumps containing weeping walls. After a short period of time the sumps were full and the weeping walls weren't able to keep up with demands put upon it.

After discussing the problem with Shane at Pumpn we decided to replace the weeping wall with Pumpn's new stainless Vibe Panel.

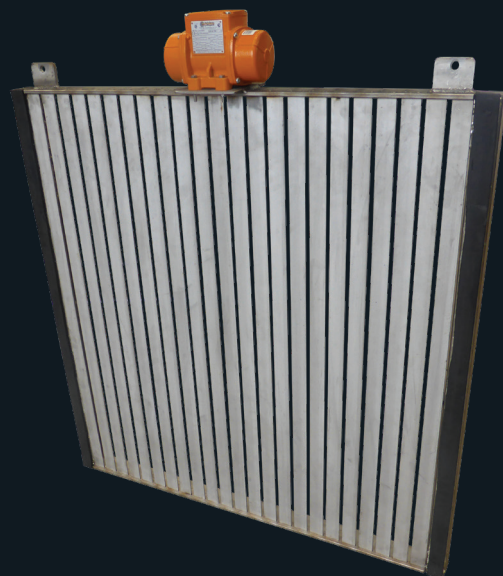
The system is working very well, the sumps are keeping up with the capacity and will only need to be emptied twice a year, unlike the old system which we were cleaning out every two months.

*Bruce & Carol Collinson-Smith
- Tihiroa Dairies Ltd*

”

Features:

- Stainless steel construction
- 0.18kW 3 phase and 1 phase option
- Rubber mounted sides and base
- Liquifies product to remove solid left behind
- 1.2 x 1.2m standard size
- Patent application



Distributed in Australia by:

DPS DAIRY
PUMPING
SYSTEMS

Dairy Pumping Systems Aust Pty Ltd
6 Ashenden Street, Leongatha, Victoria 3953, Australia
Phone: 03 9739 6521
Email: info@dairypumpingsystems.com.au
www.dairypumpingsystems.com.au