

Specification RHZ\_v23ind

# HEAVY DUTY YARDMASTER® HORIZONTAL SUCTION PUMP

- The Yardmaster Horizontal Suction Pump is an alternative where the vertical mount pumps are not a suitable solution
- Using a simple bearing pedestal design direct coupled to an electric motor, these pumps operate a 4" suction inlet
- With a high grade mechanical seal installed, the bearings are protected from your liquid
- Performance figures are equivalent to the standard Yardmaster pump range
- With a more industrial based market application, the Yardmaster Horizontal Suction Pump is available in stainless steel or standard cast iron
- Designed and manufactured in New Zealand for New Zealand conditions

## Ideal for...

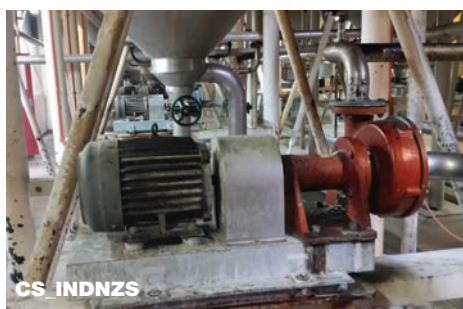
Ideal in situations where the vertical mount pumps are not a suitable solution



## Applications & Case Studies



CS\_CHI01



CS\_INDNZS

### CS\_DEN01

Horizontal pump in chamber beside steel above ground tank

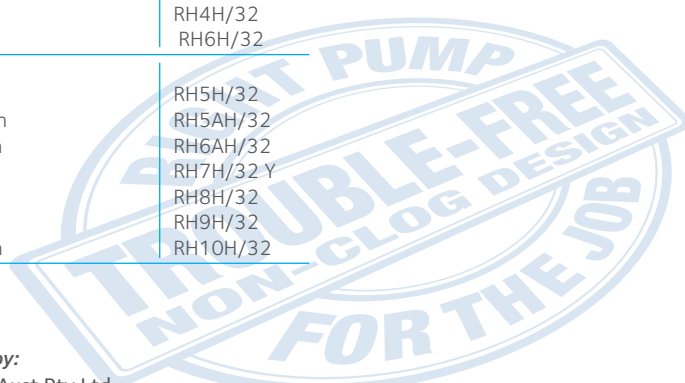
### CS\_INDNZS

NZ Starch - Transfer of maize and wastewater in the manufacture of starch.

## Product Codes

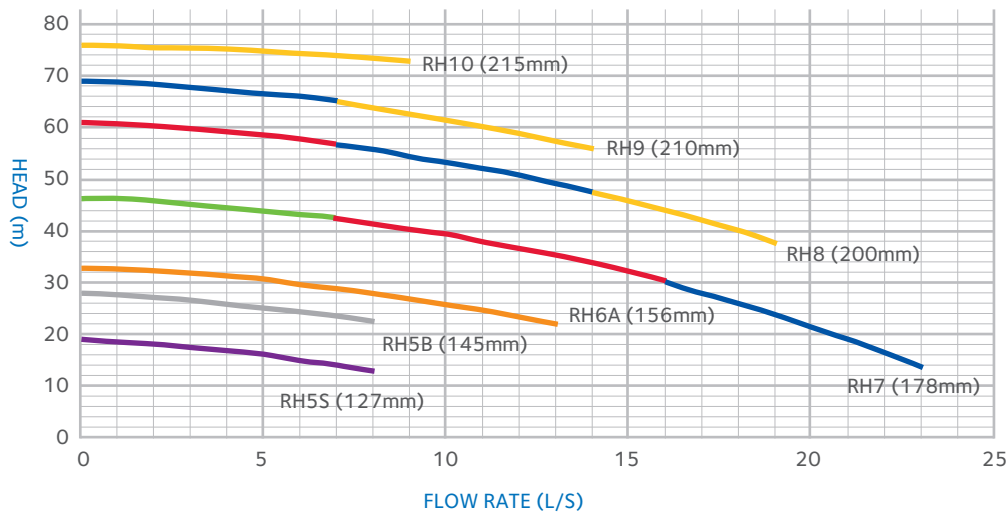
DESCRIPTION	CODE
LOW SPEED TRANSFER PUMPS with 32bs Mechanical Seal	
Yardmaster horizontal mount pump with motor; RH3H, 3hp 1400rpm	RH3H/32
Yardmaster horizontal mount pump with motor; RH4H, 5hp 1400rpm	RH4H/32
Yardmaster horizontal mount pump with motor; RH6H, 10hp 1400rpm	RH6H/32
HIGH SPEED IRRIGATION PUMPS with 32bs Mechanical Seal	
Yardmaster horizontal mount pump with motor; RH5H, 5hp 2800rpm	RH5H/32
Yardmaster horizontal mount pump with motor; RH5AH, 7.5hp 2800rpm	RH5AH/32
Yardmaster horizontal mount pump with motor; RH6AH, 10hp 2800rpm	RH6AH/32
Yardmaster horizontal mount pump with motor; RH7H, 15hp 2800rpm	RH7H/32-Y
Yardmaster horizontal mount pump with motor; RH8H, 20hp 2800rpm	RH8H/32
Yardmaster horizontal mount pump with motor; RH9H, 25hp 2800rpm	RH9H/32
Yardmaster horizontal mount pump with motor; RH10H, 30hp 2800rpm	RH10H/32

Specifications are subject to change without notice



The performance curves stated below are those for water. When slurries, manures and effluents are to be pumped, delivery, head and power will alter. For viscous liquid-solid combinations seek assistance from your agent or contact Reid & Harrison direct. Calculations can be made that will give details of the size of pump required for the task and specifications of performance.

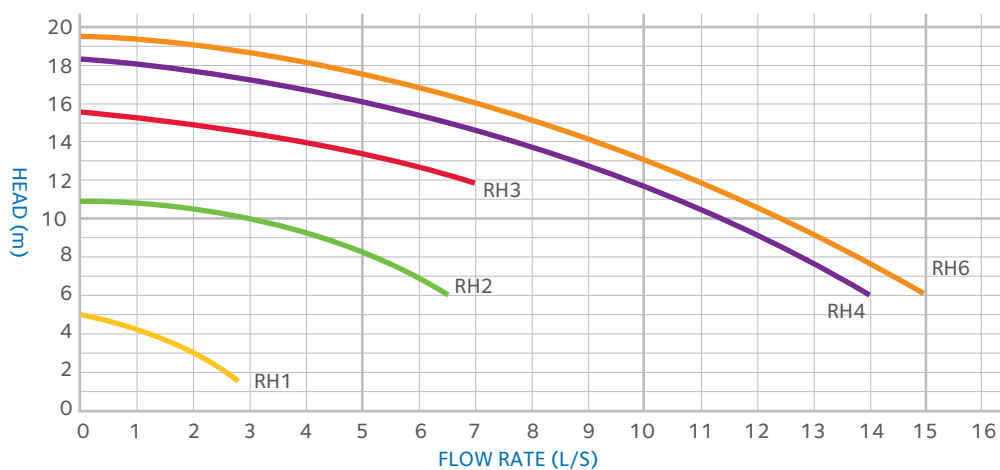
### Performance Curves - TWO POLE (2800 rpm)



	kW	HP
	4	5
	5.5	7.5
	7.5	10
	11	15
	15	20
	18.5	25
	22	30

(Impeller Size)

### Performance Curves - FOUR POLE (1400 rpm)



	IMP	kW	HP
RH1	150	0.75	1
RH2	178	1.5	2
RH3	200	2.2	3
RH4	215	4	5
RH6	220	7.5	10