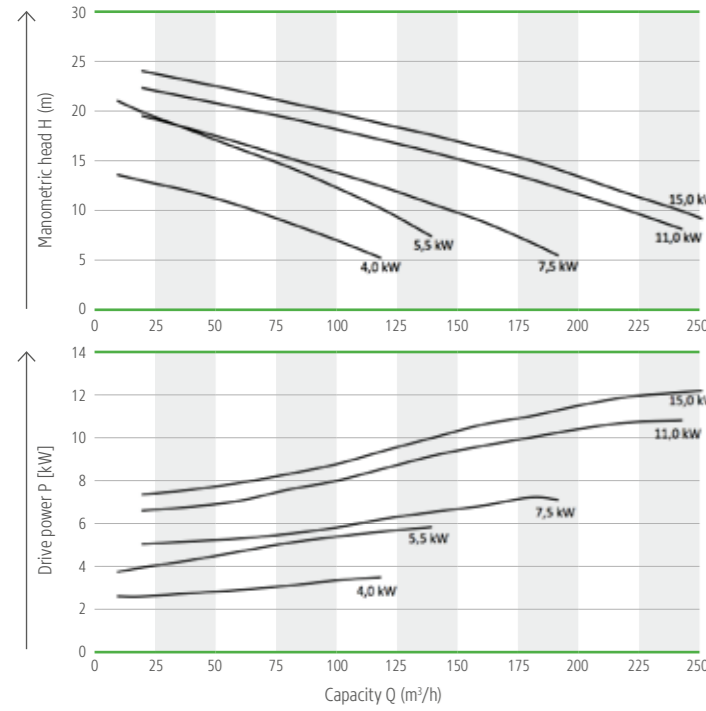
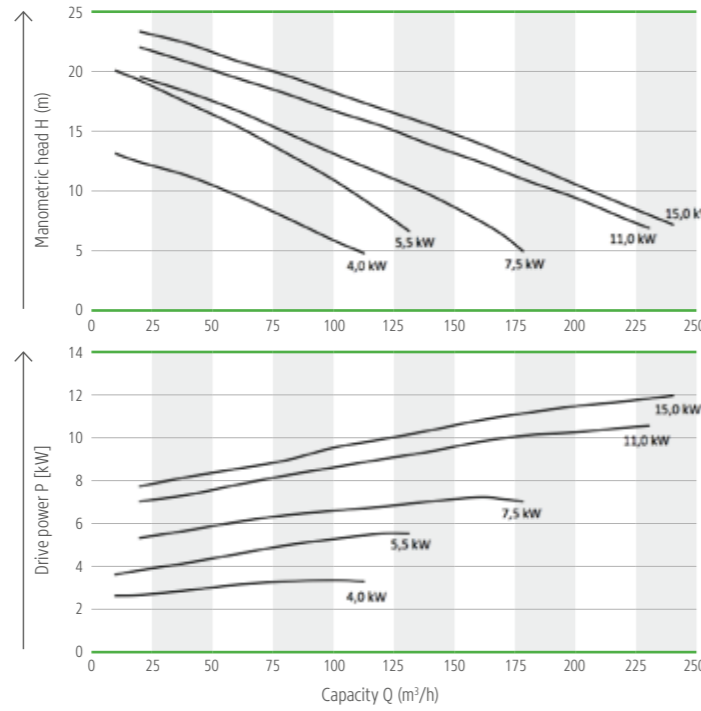


TECHNICAL DATA

Characteristic curves MAGNUM ESPH



Characteristic curves MAGNUM CSPH



Submersible Motor Pump MAGNUM ESP without cutting device

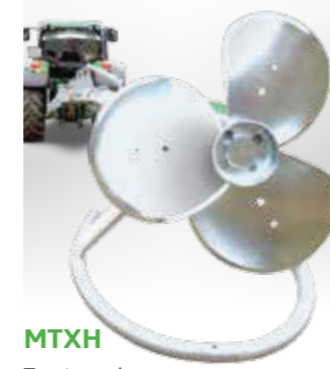
Model	Discharge m³/h	Discharge head m	max. drive power kW	max. Ampere A	Drive speed min <sup>-1</sup>	Delivery connection mm
ESPH 4	20-100	13,0-7,0	4,0	8,1	1.450	DN 80
ESPH 5,5	20-120	20,0-9,8	5,5	10,7	1.450	DN 80
ESPH 7,5	20-200	19,6-5,5	7,5	15,6	1.450	DN 100
ESPH 11	20-240	22,3-8,2	11	22,0	1.450	DN 100
ESPH 15	20-250	24,0-9,1	15	28,6	1.450	DN 100

Submersible Motor Pump MAGNUM CSP with cutting device

Model	Discharge m³/h	Discharge head m	max. drive power kW	max. Ampere A	Drive speed min <sup>-1</sup>	Delivery connection mm
CSPH 4	20-100	12,3-5,9	4,0	8,1	1.450	DN 80
CSPH 5,5	20-120	19,2-8,2	5,5	10,7	1.450	DN 80
CSPH 7,5*	20-120	19,2-8,2	7,5	14,9	1.445	DN 80
CSPH 7,5	20-180	19,5-5,1	7,5	15,6	1.450	DN 100
CSPH 11	20-230	22,0-6,9	11,0	22,0	1.450	DN 100
CSPH 15	20-240	23,7-7,4	15,0	28,6	1.445	DN 100

\* The CSP 7.5/50 Hz has the same hydraulic values as the CSP 5.5 (but with larger cutting reserves).

PRODUCTS FROM OUR SLURRY PROGRAM



**MTXH**  
Tractor mixer



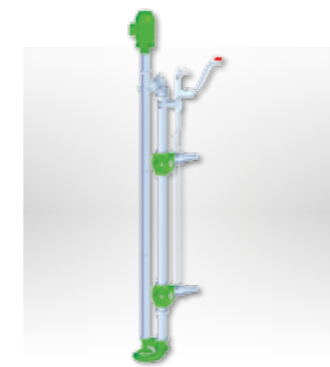
**MSXH**  
Submersible motor mixer



**SEPARATOR**  
Press screw separator for solid-liquid separation



**SEPARATOR PLUG & PLAY**  
System for portable slurry separation



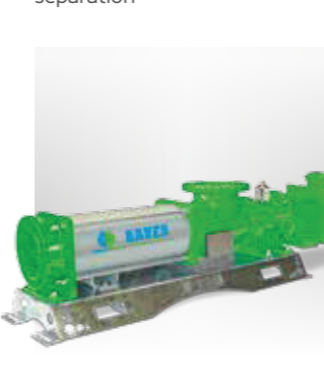
**MAGNUM LEE/LEC**  
Long shaft pump



**MAGNUM SM**  
Thick matter pump gear unit design



**MAGNUM CSPH**  
Submersible motor pump gear unit design



**HELIXDRIVE**  
Eccentric screw pump



**MAGNUM SX**  
Thick matter pump gear and pedestal pump



**Slurry tankers and polyester tanker**  
Different tanker types for every requirement



**Trailing hose applicator**  
Modular system for all types of tankers



**Slurry injector**  
Innovative spreading technology

Distributed in Australia by:



Dairy Pumping Systems Aust Pty Ltd  
6 Ashenden Street, Leongatha, Victoria 3953, Australia  
Phone: 03 9739 6521  
Email: info@dairypumpingsystems.com.au

[www.dairypumpingsystems.com.au](http://www.dairypumpingsystems.com.au)

Röhren- und Pumpenwerk BAUER GmbH

8570 Voitsberg / Austria  
T +43 3142 200-0  
F +43 3142 200-320/-340  
M sales@bauer-at.com  
W www.bauer-at.com



no-sun.com

Subject to change / MAGNUM ESPH - CSPH / 11.2016

WASTE WATER TREATMENT

# MAGNUM ESPH / CSPH

SUBMERSIBLE MOTOR PUMP IN EFFLUENT AND CUTTING DESIGN





# MAGNUM ESPH / CSPH

The BAUER submersible motor pumps impresses with singular performance, versatile application and long lifespan.

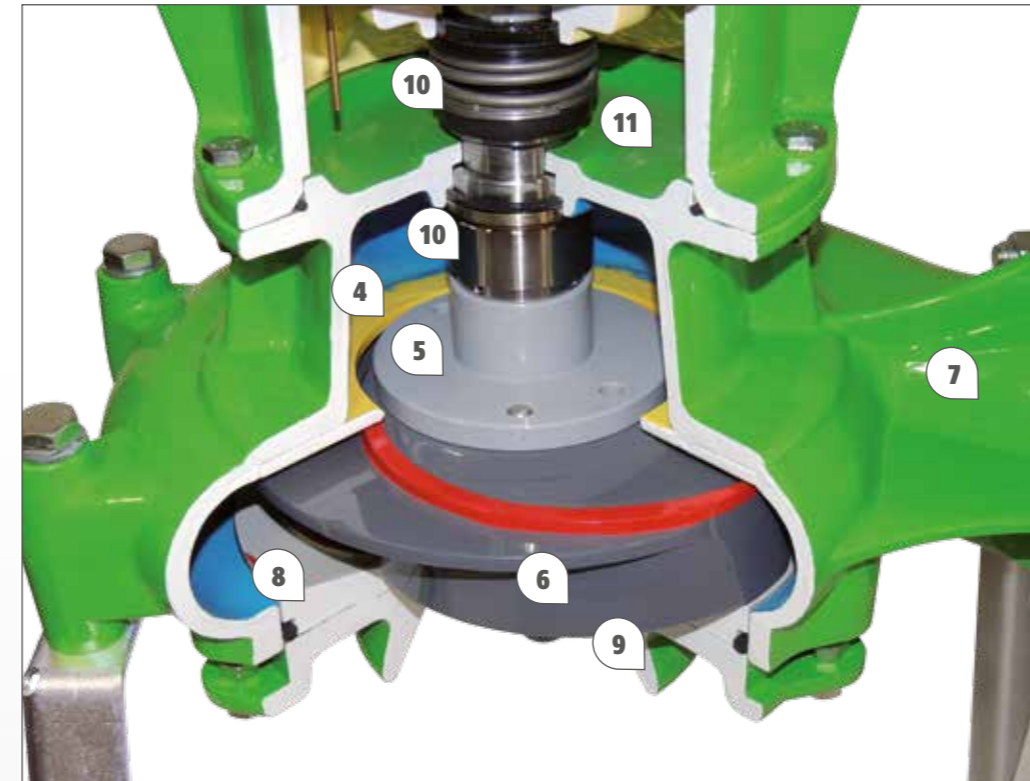
## THE FACTS

- Conveying capacities up to 250 m<sup>3</sup>/h
- Outstanding cutting performance
- High quality chrome steel cutting unit
- Submersible rotary motor 4,0 – 15,0 kW with insulation class H (optional)
- Higher flow rate efficiency class IE 2
- Temperature control for application in biogas plants
- Additional security thanks to leakage sensors
- High efficiency, low operating costs

- 1 Leakage sensor
- 2 Casted terminal box
- 3 Submersible motor

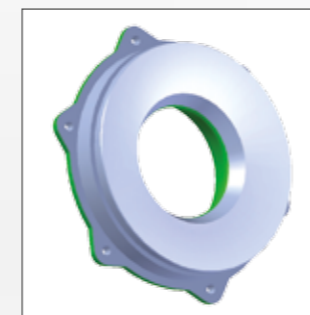


- 4 Wear disc
- 5 Impeller hub
- 6 Impeller
- 7 Spiral housing
- 8 Cutting device
- 9 Suction bell
- 10 Mechanical sealing
- 11 Oil collection



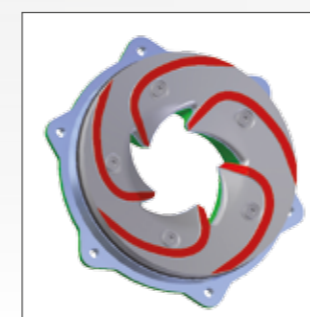
### Higher flow rate

The new designed suction bell of the MAGNUM CSP accelerates the flow of the media.



### Long lifespan

The new cutting device of the MAGNUM CSP is adjustable and easy to replace. The use of high quality chrome-steel clearly improves the lifespan of the pump.

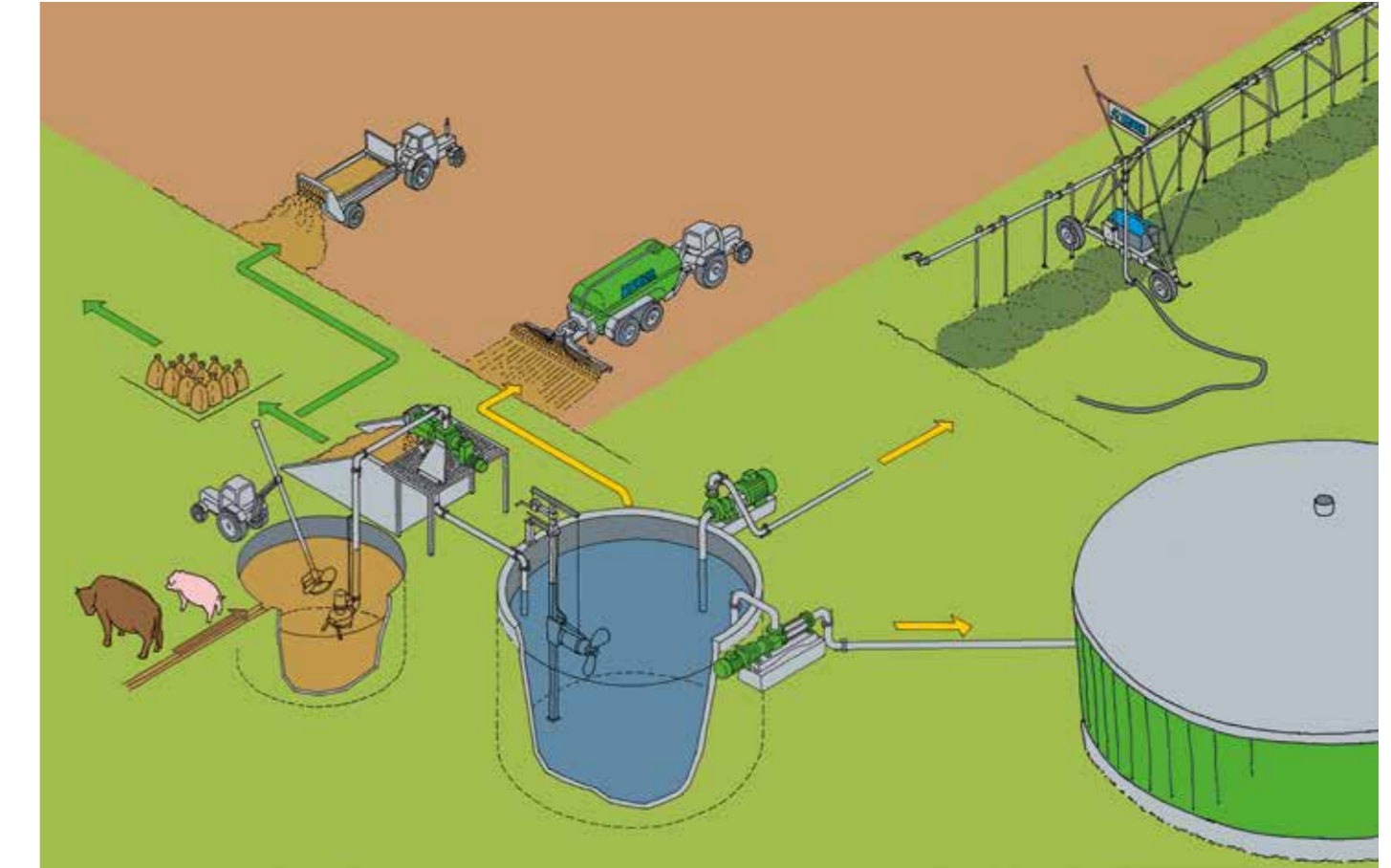


### Three way cock

With rigid stirring nozzle for ESPH / CSPH from 7,5 – 15 kW



## The refinement of manure into valuable nutrients Homogenizing-separating-conveying-distributing



### Coupling pedestal HK89 and HK108 for ESPH-CSPH

- Stainless steel design for long life and perfect function (1.4301)
- Easy and quick mounting
- Mounting in any kind of pit possible (floor even or gradient 1 – 2%)
- outflow flange according to DIN EN 1092-1 DN 100-PN16

